

Planning - Oxford City Planning Committee

On **Tuesday 26 May 2026** At **6.00 pm**

www.oxford.gov.uk



Presentations

Contents

Note: Planning Committee presentations contain mostly pictures, maps and plans. These are not in an accessible format.

To see full details of the application including full plans, representations, public comments and supplementary information, please [click here](#) and enter the relevant Planning Reference number in the search box

6.	25/03195/FUL Mansfield College, Mansfield Road, Oxford, Oxfordshire	3 - 20
7.	25/03196/LBC Mansfield College, Mansfield Road, Oxford, Oxfordshire	21 - 38
8.	25/03223/FUL Land At Watlington Road, Cowley, Oxford	39 - 42

The agenda, reports and any additional supplements can be found together with this supplement on the committee meeting webpage.

*View or subscribe to updates for agendas, reports and minutes at mycouncil.oxford.gov.uk.
All public papers are available from the calendar link to this meeting once published*

Oxford City Council, Town Hall, St Aldate's Oxford OX1 1BX

This page is intentionally left blank

Oxford City Planning Committee Presentation

www.oxford.gov.uk



3

Reference Number: 25/03195/FUL

Site Address: Mansfield College, Oxford



Site Location



[www.oxford](http://www.oxford.gov.uk)



Existing Site Entrance with view of the North Range



www.oxford.gov.uk



Existing South Range



www.oxford.gov.uk



Northern Wedge

www.oxford.gov.uk



Existing South Range Elevations



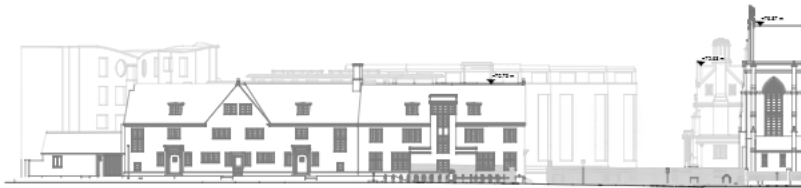
Mansfield Road John Marsh Building Garden Building Hands Building

1 South Range - North Elevation - Existing
1:200



Hands Building Garden Building John Marsh Building Staircase E John Marsh Building Mansfield Road

2 South Range - South Elevation - Existing
1:200



Mansfield Road Substation 4-6 Mansfield Road John Marsh Building North Quad & Car Park Chapel

1 South Range - East Elevation - Existing
1:200



Prince's Lodge North Quad West Quad Hands Building Garden Building

2 South Range - West Elevation - Existing
1:200



Existing North Range Elevations

www.oxford.gov.uk



10



Existing Kitchen Extension

East Wing

Tower

West Wing

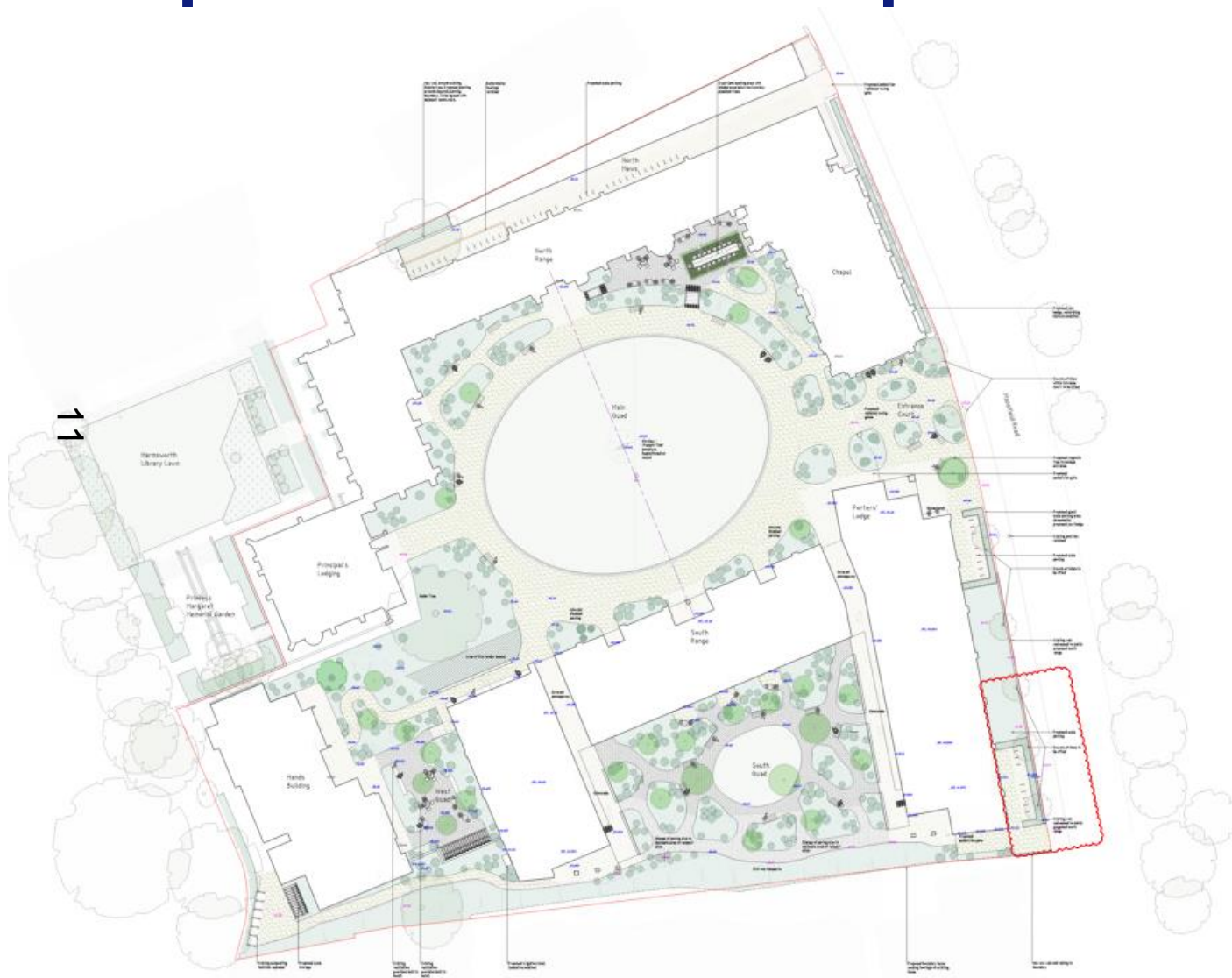
Library

Pindar's Lodgings

2 North Range - North Elevation - Existing
1:100



Proposed Site/Landscape Plan



www.oxford.gov.uk



Proposed South Range Floor Plans



OXFORD
CITY
COUNCIL

12

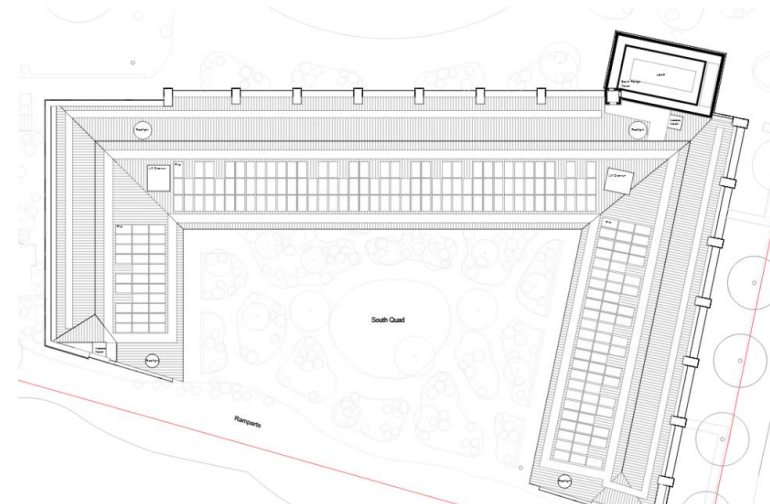
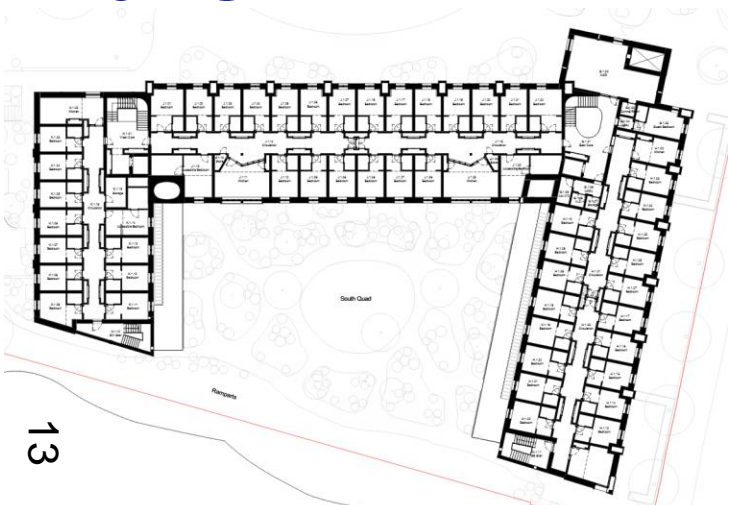


Mansfield Road



Proposed South Range Floor Plans

www.oxford.gov.uk



13



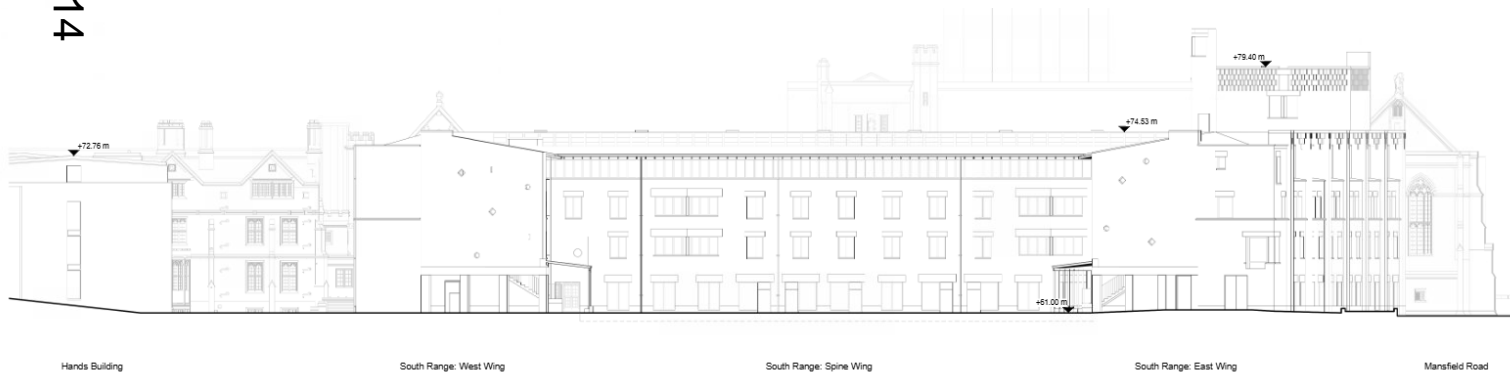
Proposed South Range Elevations

www.oxford.gov.uk



1 South Range - North Elevation - Proposed
1 : 200

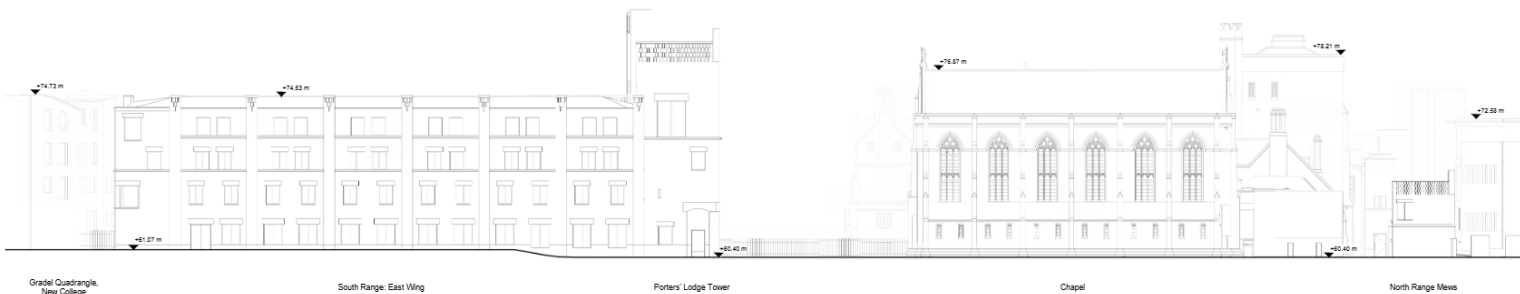
14



2 South Range - South Elevation - Proposed
1 : 200

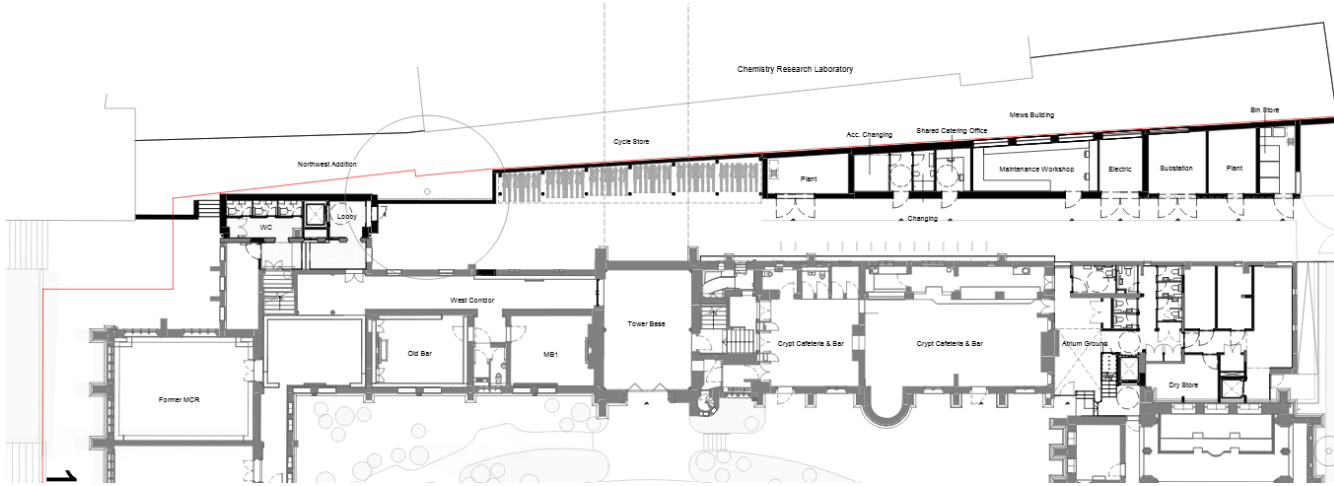


Proposed South Range Elevations



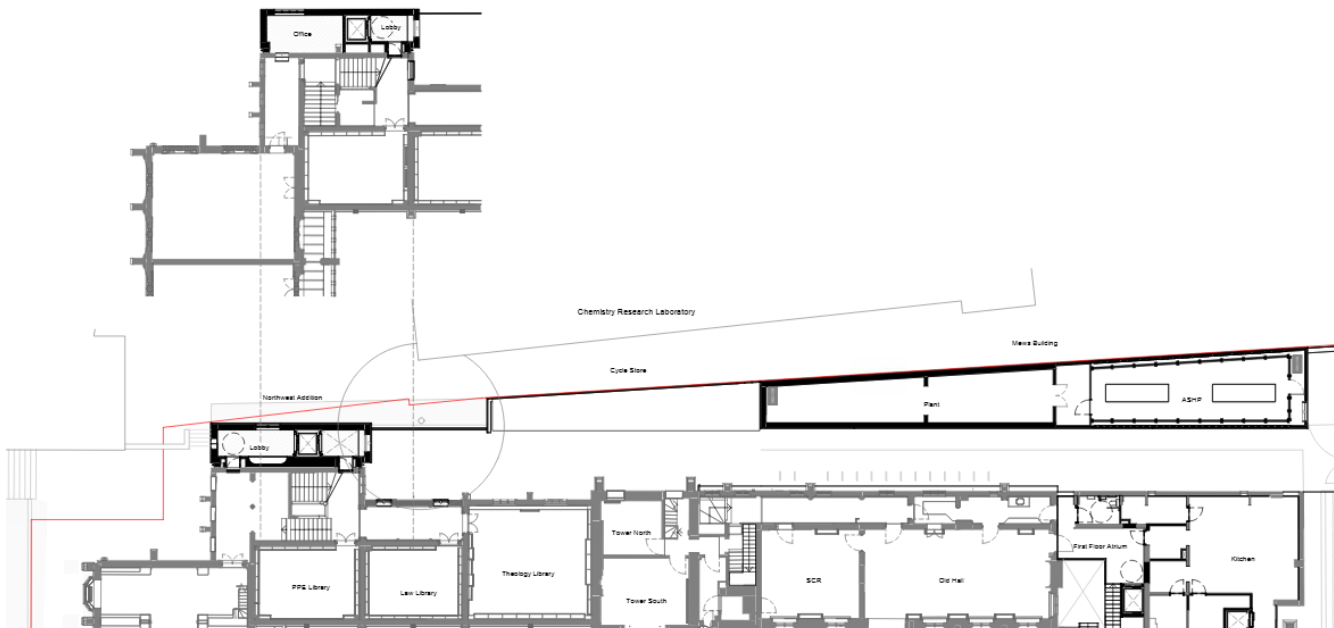
Proposed North Range Floor Plans

www.oxford.gov.uk

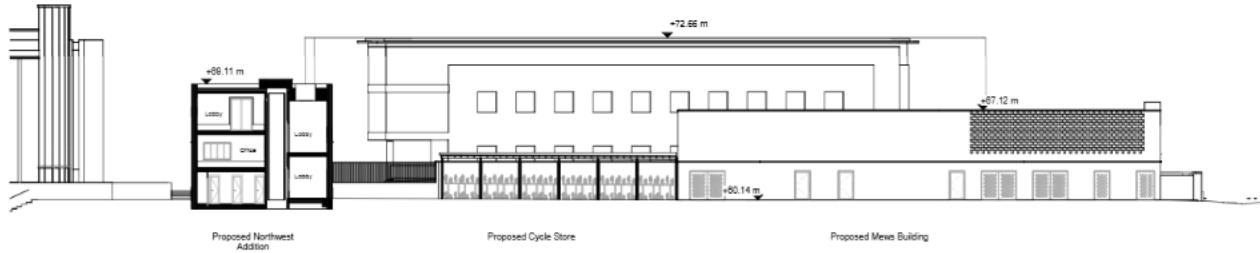


16

1 North Range Proposed Landing Plan
1:200

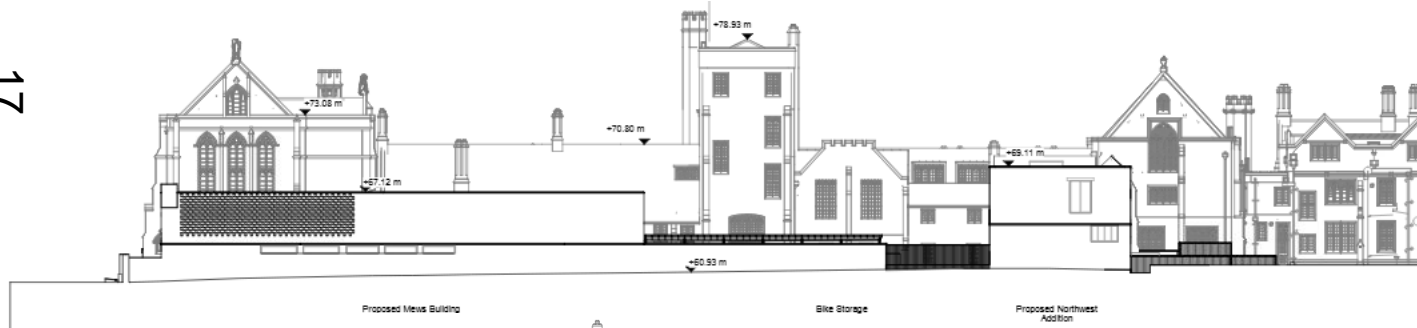


Proposed North Range Elevations



1 North Range - Proposed Mews Building South Elevation
1:200

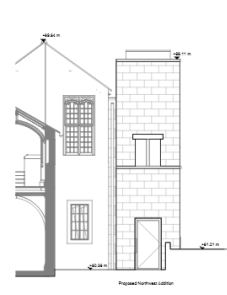
17



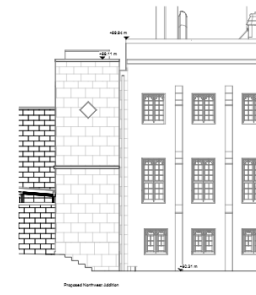
2 North Range -
1:200



1 North Range - Proposed Northwest Addition - North Elevation
1:200



1 North Range - Proposed Northwest Addition - East Elevation
1:200



2 North Range - Proposed Northwest Addition - West Elevation
1:200



Proposed Visuals – Mansfield Road

www.oxford.gov.uk



Proposed Visual – Church of St Mary



19

www.oxford.gov.uk



**OXFORD
CITY
COUNCIL**



This page is intentionally left blank

Oxford City Planning Committee Presentation

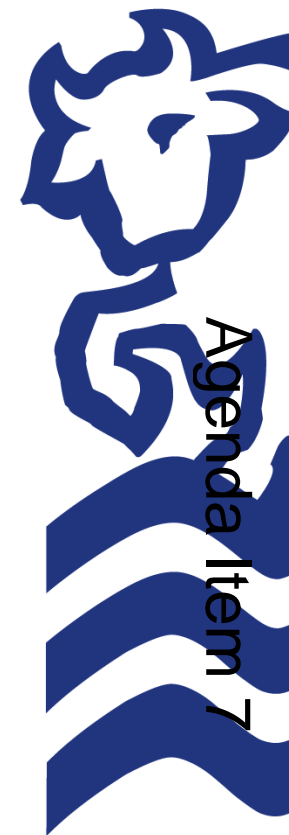
www.oxford.gov.uk



21

Reference Number: 25/03196/LBC

Site Address: Mansfield College, Oxford



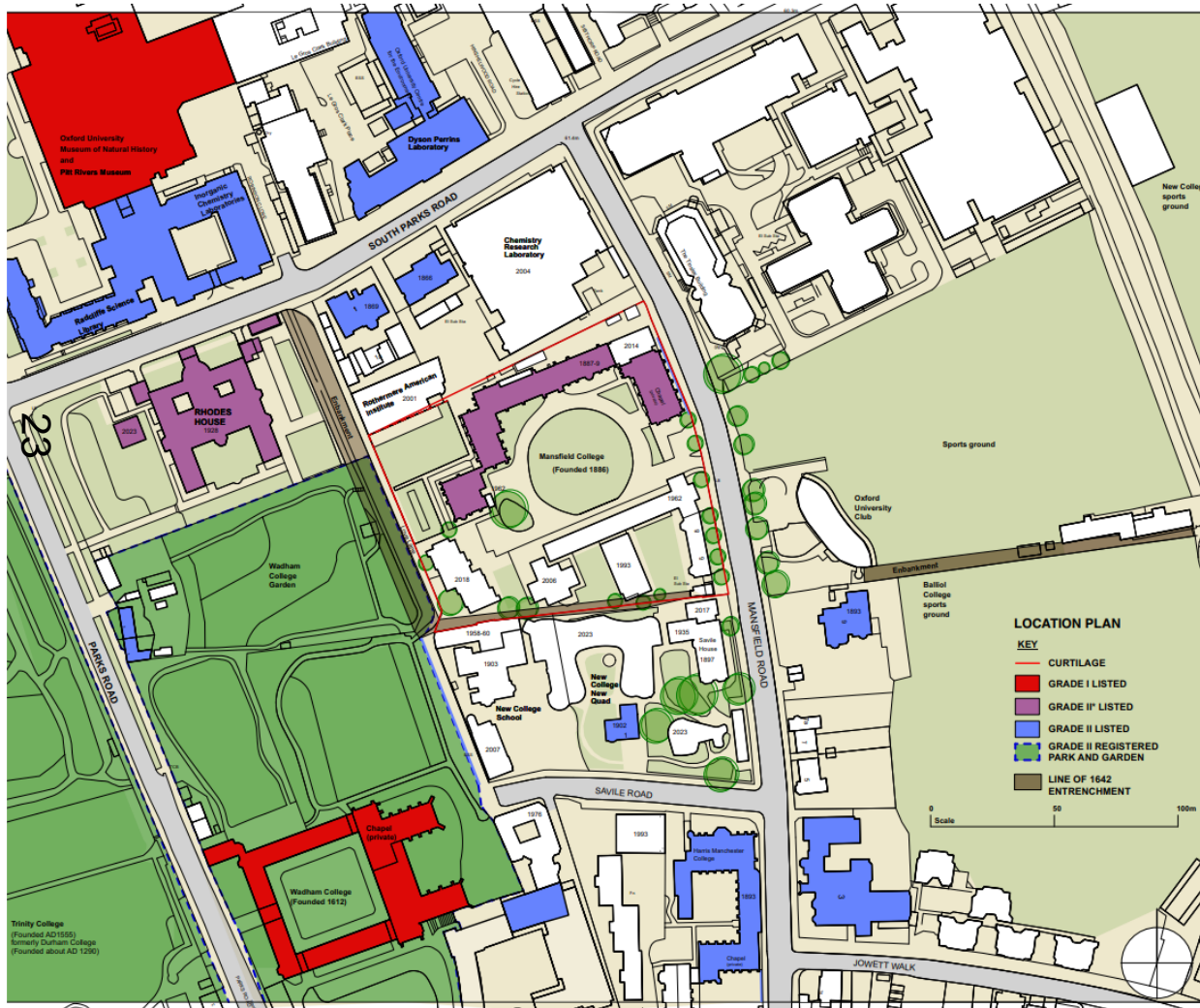
Site Location



[www.oxford](http://www.oxford.gov.uk)



Heritage Assets



Location plan showing Mansfield College in context with designated heritage assets [all within the conservation area]. The red line shows the historic curtilage. The modern northern boundary and application site boundary differ slightly from this line.



View from main quad



www.oxford.gov.uk



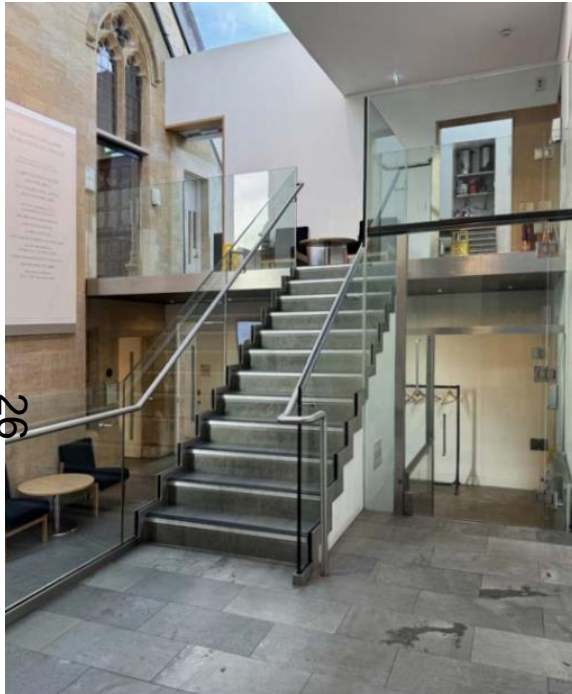
Northern elevation & WWII bomb shelter



www.oxford.gov.uk



Inside of modern kitchen extension



26



www.oxford.gov.uk



View of college library & west stairs



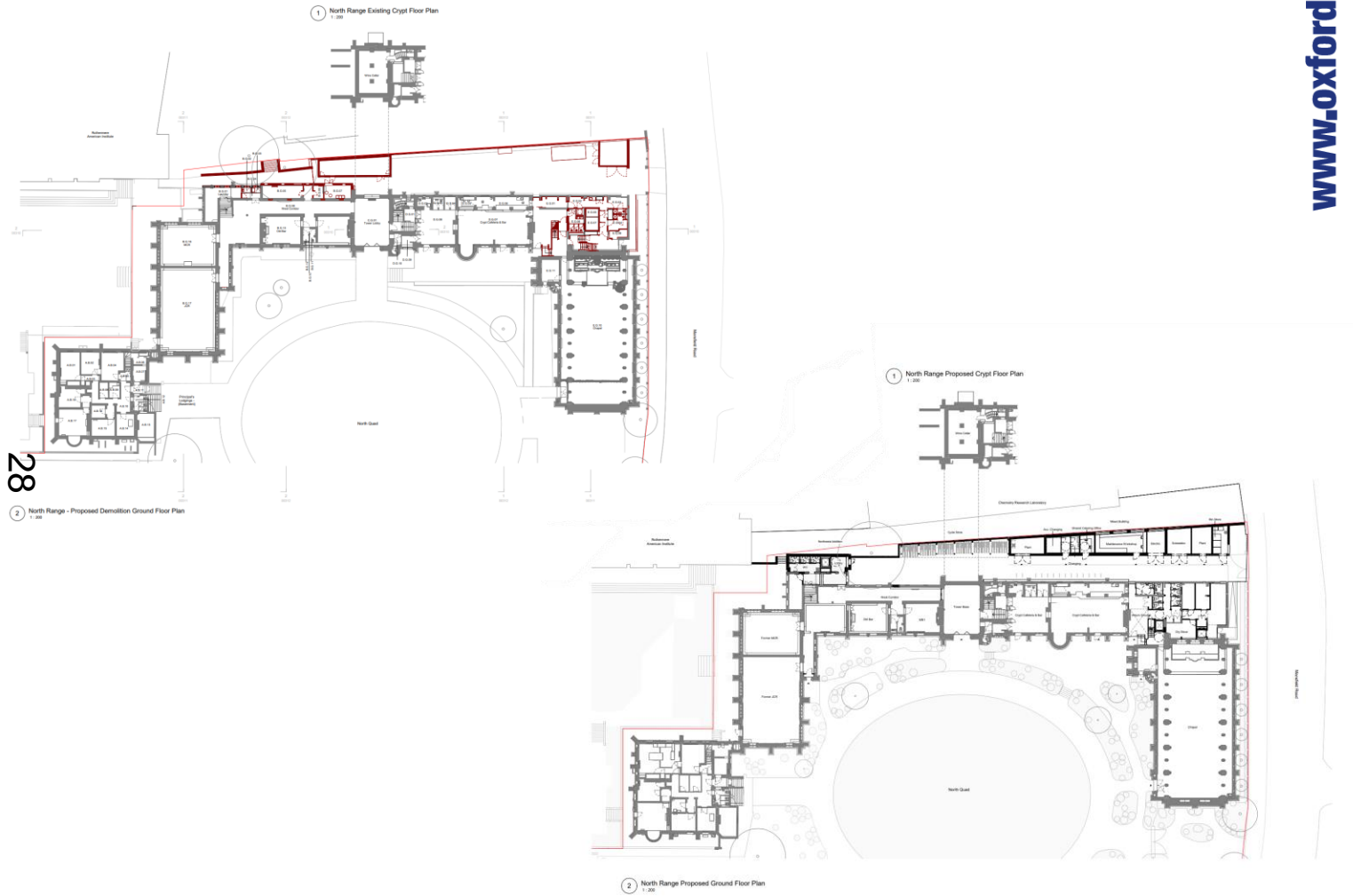
2.



www.oxford.gov.uk



Ground floor demolition & proposed

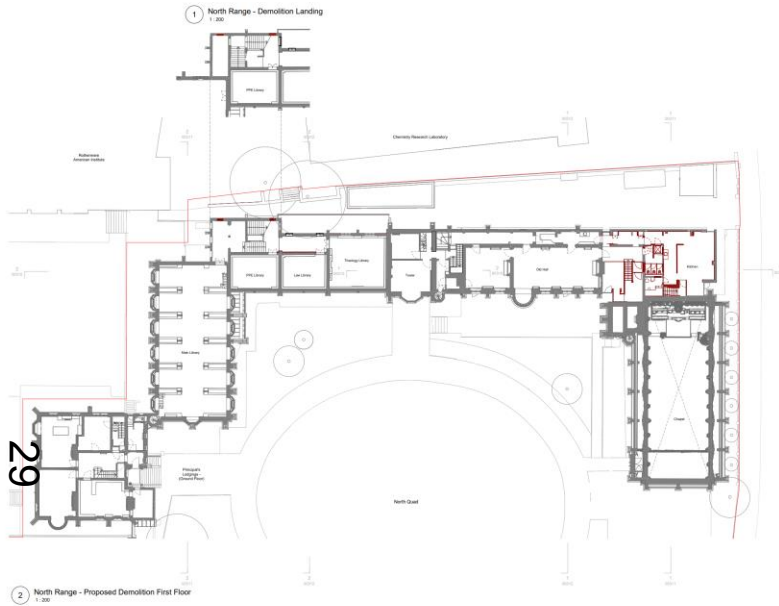


www.oxford.gov.uk

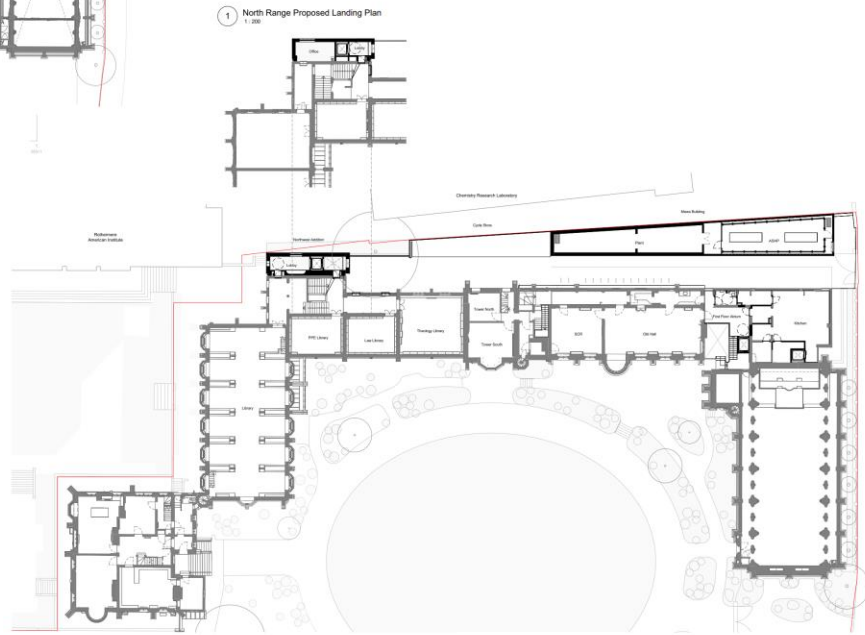


First floor demolition & proposed

www.oxford.gov.uk



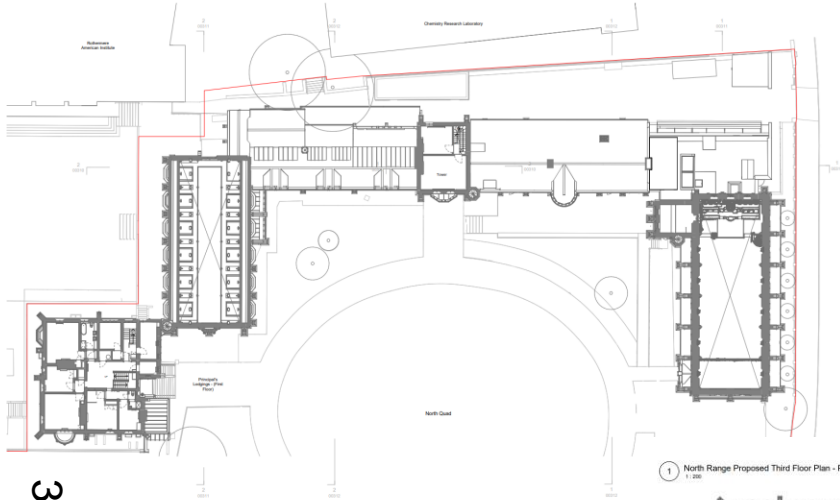
2 North Range - Proposed Demolition First Floor
1:200



2 North Range Proposed First Floor Plan
1:200



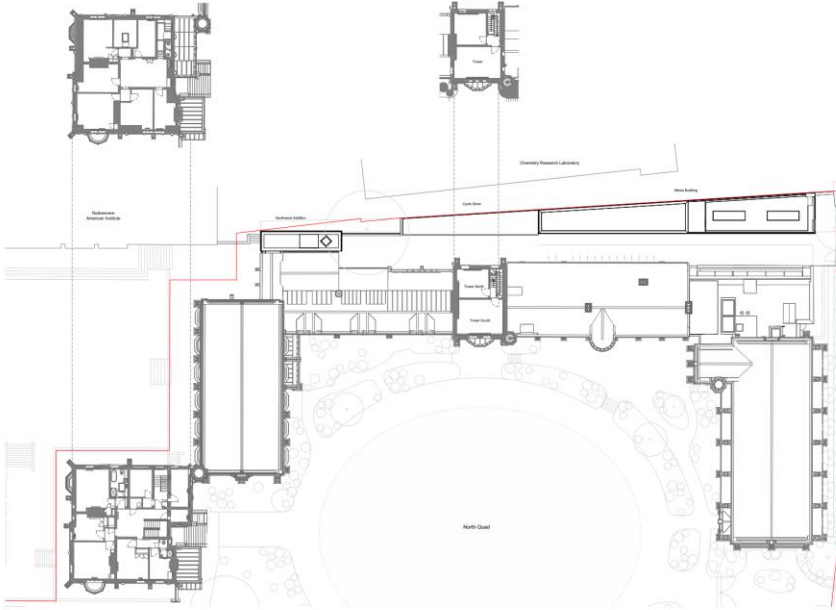
Second floor demolition & proposed



30
1 North Range - Proposed Demolition Second Floor Plan

1 North Range Proposed Third Floor Plan - Principal's Lodgings
1:200

2 North Range Proposed Third Floor Plan - Tower
1:200

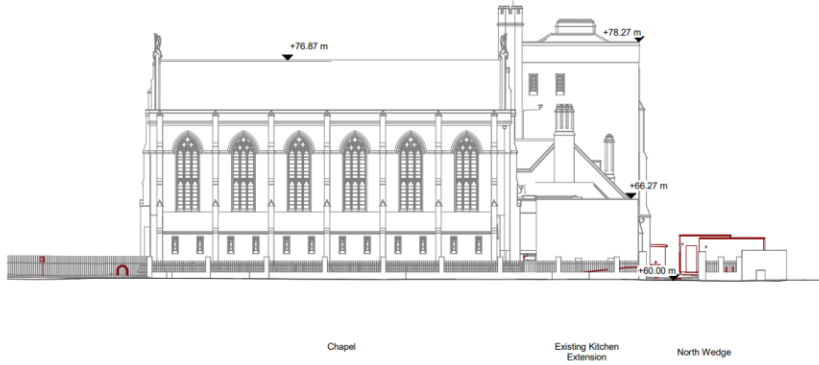


3 North Range Proposed Second Floor Plan
1:200

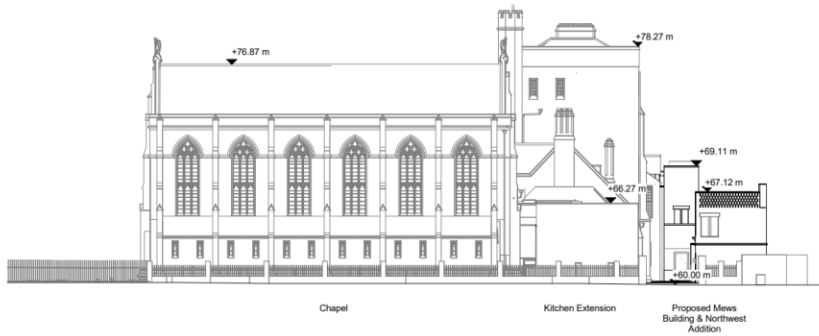
www.oxford.gov.uk



East Elevation demolition & proposed



1 North Range - East Elevation - Demolition
1:200



2 North Range - East Elevation - Proposed
1:200



Section through library extension



1 North Range - North Elevation - Demolition
1:200

32

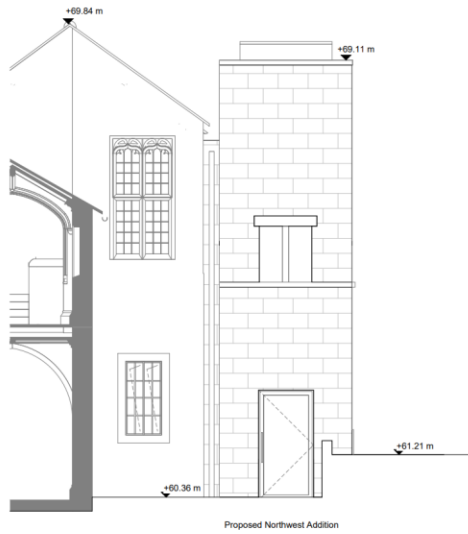


2 North Range - North Elevation - Proposed
1:200

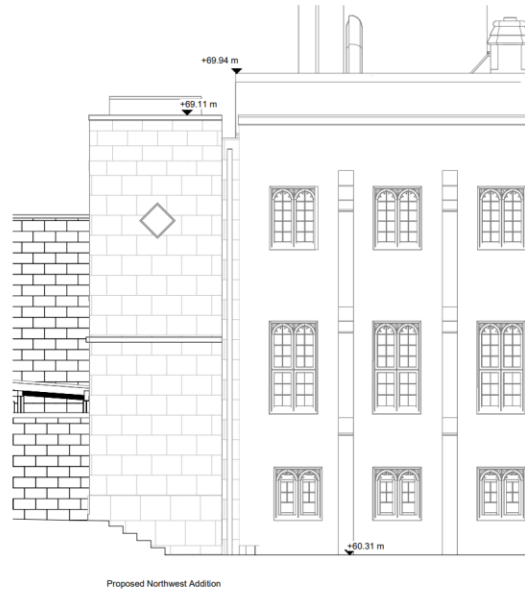


Library extension east & west elevations

33



1 North Range - Proposed Northwest Addition - East Elevation
1:50



2 North Range - Proposed Northwest Addition - West Elevation
1:50



Library extension east & west elevations

34



Proposed Northwest Addition

1 North Range - Proposed Northwest Addition - North Elevation
1:50



Section through library extension

35



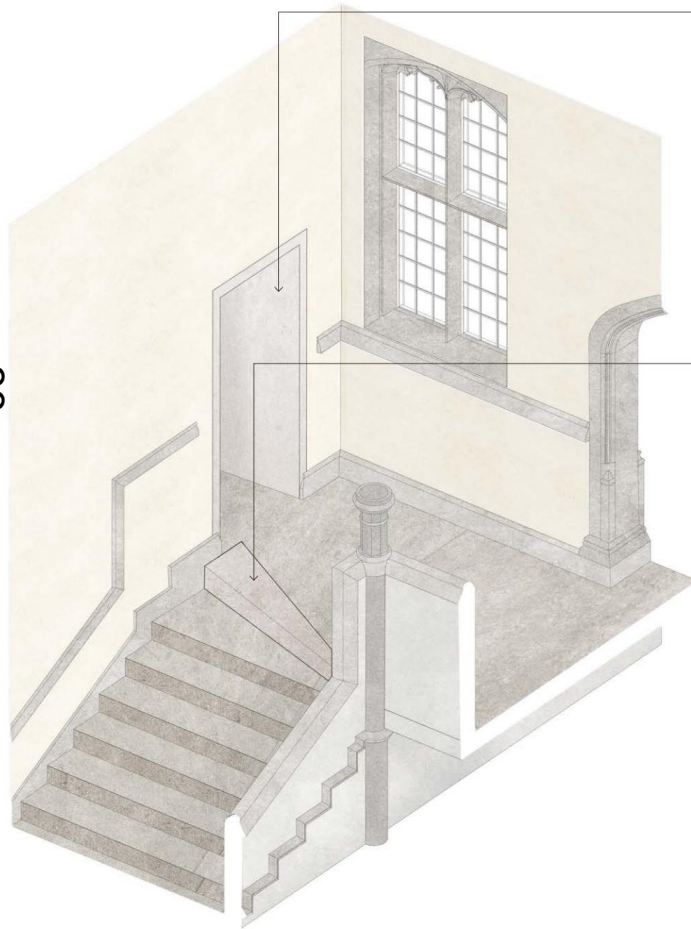
2 North Range - Section FF - Proposed
1:100



Details of internal works for new opening to library extension

1.

36



OPENINGS

The existing fabric will be carefully removed, preserved, and reinstated where possible. The opening details will be kept simple to avoid detracting from Champneys' design, with further development planned for the next stages.

STAIR INFILL PIECE

A wedge-shaped piece of stone will be cut to fit the existing stairs and attached to the larger top step, creating a more spacious landing area. The step sizes will remain compliant to regulations. The stone skirting and dado rail, carefully removed, will be reinstated to align with the new stair.

www.oxford.gov.uk



Existing and proposed west corridor



37



www.oxford.gov.uk



Lift extension from Chemistry Building car park



38



www.oxford.gov.uk



Oxford City Planning Committee Presentation

www.oxford.gov.uk



39

Reference Number: 25/03223/FUL

**Site Address: Land At Watlington Road,
Cowley**



Site Location Plan



Views along Watlington Road



Looking North



Looking South

www.oxford.gov.uk



**OXFORD
CITY
COUNCIL**



Views along Watlington Road



Looking North

Looking towards roundabout

www.oxford.gov.uk

